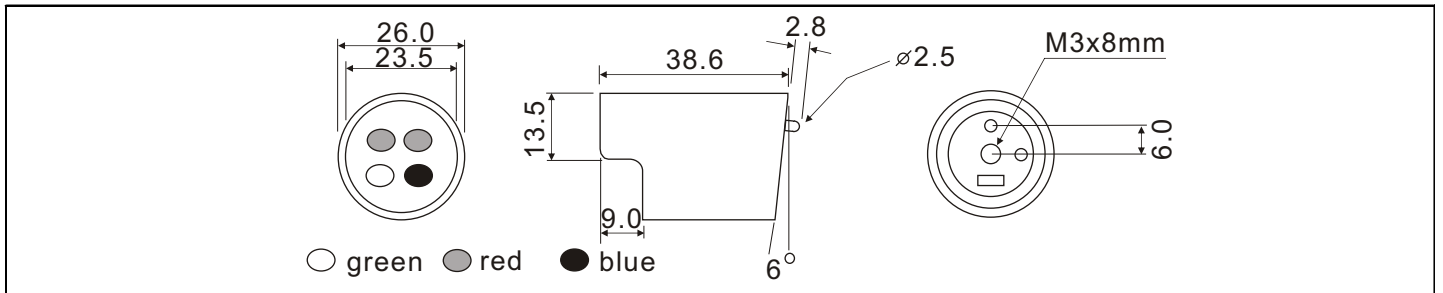


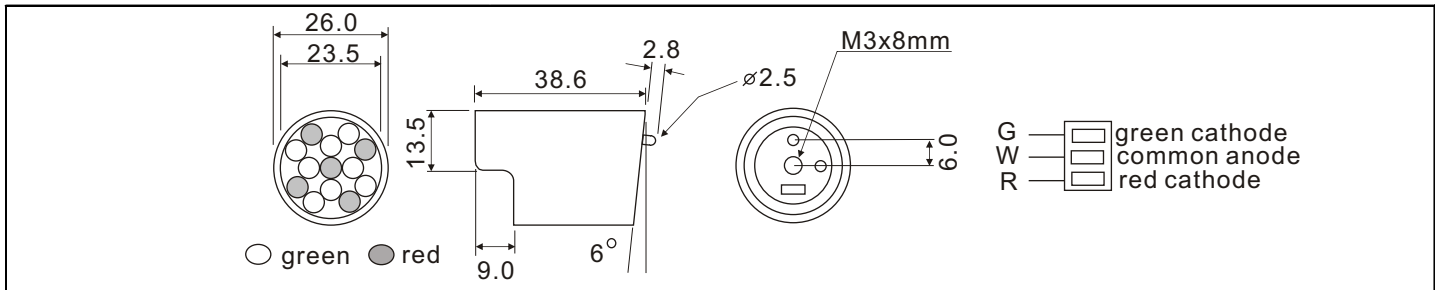
# Cluster LEDs

Ta=25°C

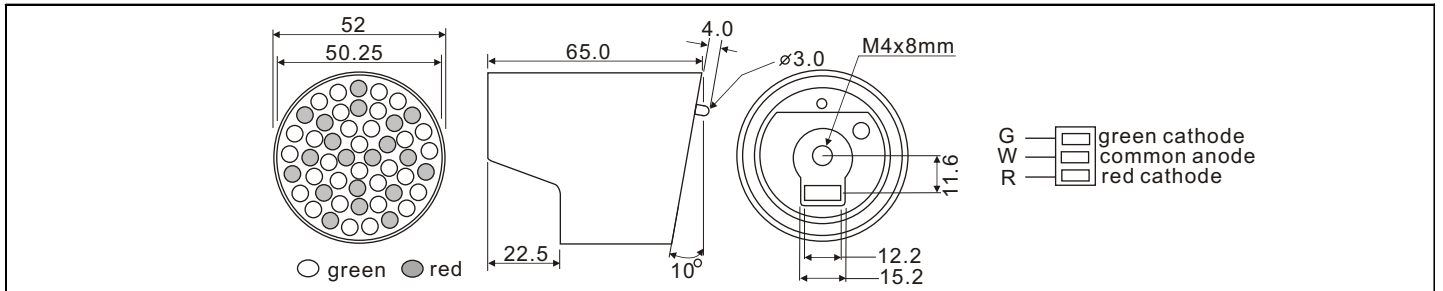
Device No	Emitter Color		Absolute Maximum Ratings					Electrical/Optical Characteristics			
	Color	LED number	Pd (W)	IF (mA)	VR	Temp. operate	Temp. storage	$\lambda_p$	Forward Voltage		Brightness (cd)
									VF (V)	IF (mA)	



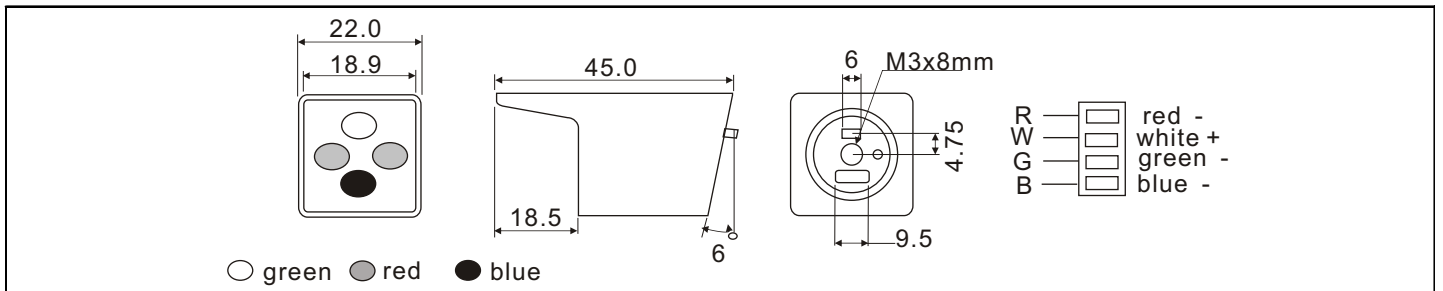
HJ-26211	red	2	0.072	25	10	-20~+80 °C	-20~+90 °C	660	3.6	20	1.00
	green	1	0.072	25	5			525	3.6	20	1.40
	blue	1	0.072	25	5			470	3.6	20	0.65



HJ-26580	red	5	0.285	30	25	-25~+80 °C	-30~+90 °C	660	9.0	20	1.10
	yellow green	8	0.610	70	20			570	8.8	50	1.20



HJ-52000A	red	20	1.140	60	50	-20~+80 °C	-20~+90 °C	660	18.0	40	7.00
	yellow green	30	2.250	100	50			570	21.5	60	7.50

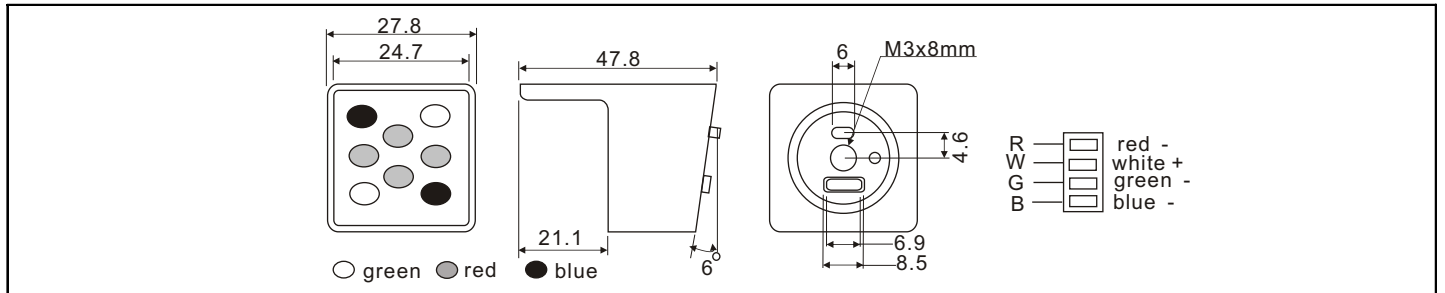


HJ-22211(1/0)	red	2	0.114	30	10	-25~+80 °C	-25~+90 °C	660	3.6	20	1.00
	green	1	0.072	30	5			525	3.6	20	1.40
	blue	1	0.072	30	5			470	3.6	20	0.65

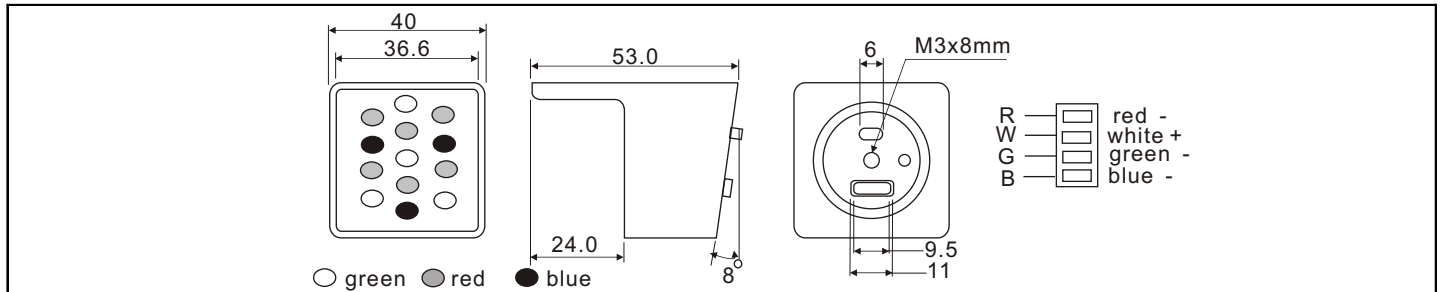
# Cluster LEDs

Ta=25°C

Device No	Emitter Color		Absolute Maximum Ratings					Electrical/Optical Characteristics			
	Color	LED number	Pd (W)	IF (mA)	VR	Temp. operate	Temp. storage	$\lambda_p$	Forwad Voltage		Brightness (cd)
									VF (V)	IF (mA)	



HJ-28422(1/0)	red	4	0.228	30	20	-25~+80 °C	-25~+90 °C	660	7.2	20	2.00
	green	2	0.144	30	10			525	7.2	20	2.80
	blue	2	0.144	30	10			470	7.2	20	1.25



HJ-40643N	red	6	0.180	60	20	-25~+80 °C	-25~+90 °C	660	5.7	40	3.00
	green	4	0.248	60	10			525	6.6	40	5.80
	blue	3	0.160	30	15			470	9.9	20	1.38