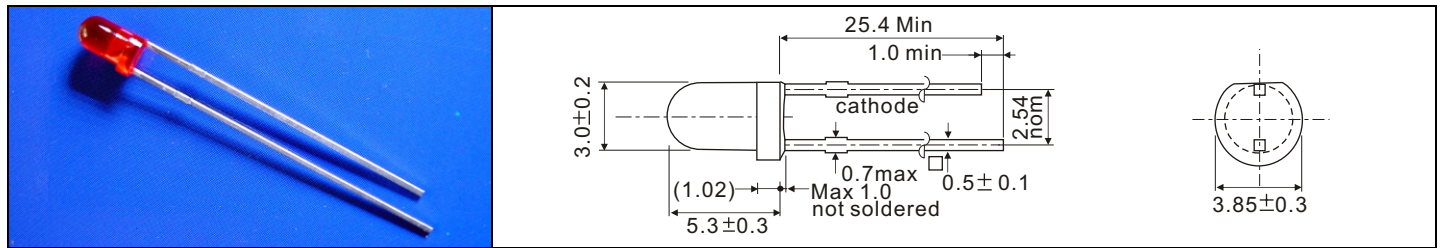


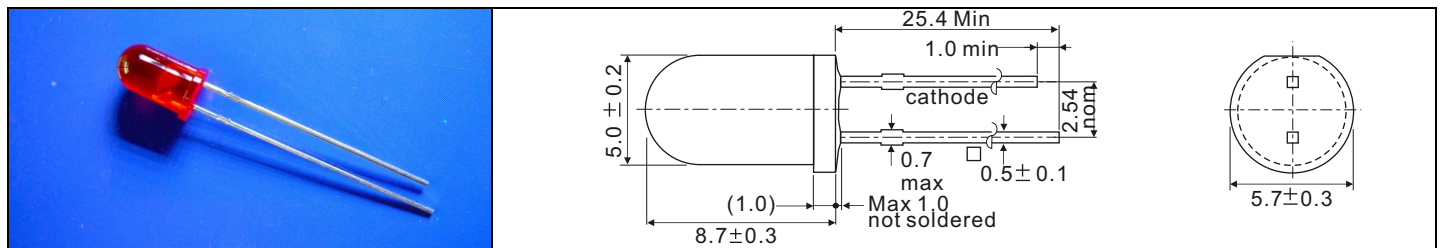
High Voltage LEDs

IF=10mA Ta=25°C

Device No	Color		Wavelength (nm)		VF Typical (V)	Brightness (mcd)		View Angle 2θ1/2
	Emitter	Lens	λp	λd		IV1	IV2	



φ 3	HB3b-142-5V	hi-red	colored diffused	700	658	5.0	2.5	2.5	40
	HB3b-145R-5V	hi-eff red	colored diffused	625	618		20.0	20.0	
	HB3b-143-5V	yellow green	colored diffused	570	567		30.0	30.0	
	HB3b-144-5V	yellow	colored diffused	589	585		20.0	20.0	
	HB3b-145-5V	orange	colored diffused	625	618		20.0	20.0	
	HB3b-142-12V	hi-red	colored diffused	700	658	12.0	2.5	2.5	
	HB3b-145R-12V	hi-eff red	colored diffused	625	618		20.0	20.0	
	HB3b-143-12V	yellow green	colored diffused	570	567		30.0	30.0	
	HB3b-144-12V	yellow	colored diffused	589	585		20.0	20.0	
	HB3b-145-12V	orange	colored diffused	625	618		20.0	20.0	



φ 5	HB5-132-5V	hi-red	colored diffused	700	658	5.0	2.5	2.5	30
	HB5-135R-5V	hi-eff red	colored diffused	625	618		25.0	25.0	
	HB5-133-5V	yellow green	colored diffused	570	567		40.0	40.0	
	HB5-134-5V	yellow	colored diffused	589	585		25.0	25.0	
	HB5-135-5V	orange	colored diffused	625	618		25.0	25.0	
	HB5-132-12V	hi-red	colored diffused	700	658	12.0	2.5	2.5	
	HB5-135R-12V	hi-eff red	colored diffused	625	618		25.0	25.0	
	HB5-133-12V	yellow green	colored diffused	570	567		40.0	40.0	
	HB5-134-12V	yellow	colored diffused	589	585		25.0	25.0	
	HB5-135-12V	orange	colored diffused	625	618		25.0	25.0	

IV1: Labsphere LED-1100 IV2: EXELTRON 2001.