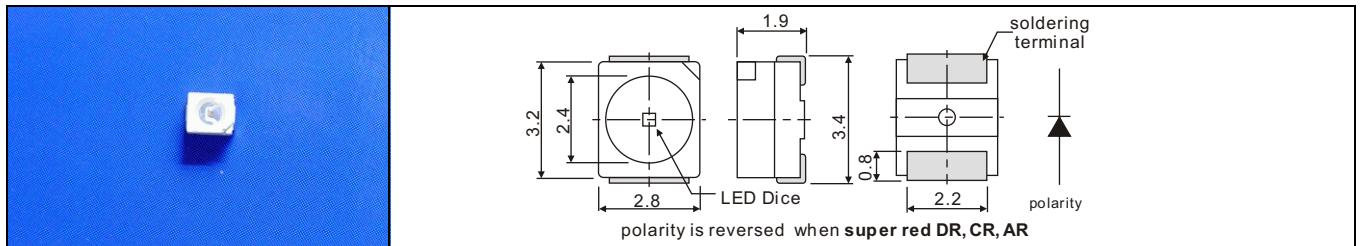


# Top LEDs

With Reflector Type 3.5mm(L) X 2.7mm(W) X 1.9mm(H)

If=20mA Ta=25°C

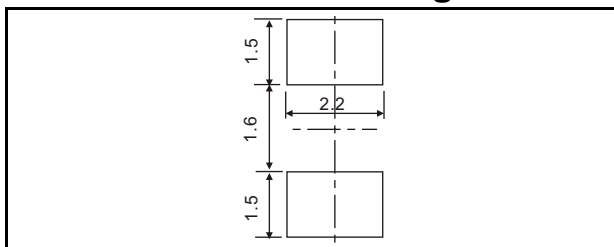
Device No	Color		Wavelength (nm)		VF Typical (V)	Brightness (mcd)		View Angle 2θ1/2
	Emitter	Lens	λp	λd		IV1	IV2	



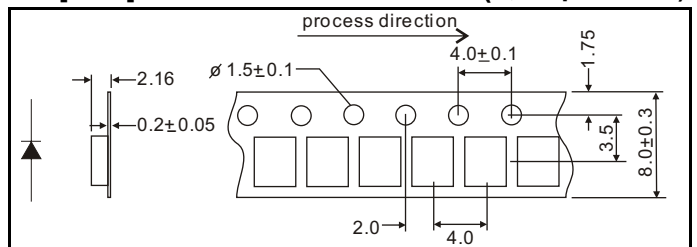
HTLB2-43	yellow green	water clear	570	567	2.15	18.0	18.0	120
HTLB2-43CG	yellow green		570	567	2.15	25.0	25.0	
HTLB2-43BG	yellow green		570	567	2.15	35.0	35.0	
HTLB2-43AGC	pure green		523	525	3.50	200.0	200.0	
HTLB2-43B	bluish green		502	505	3.50	120.0	120.0	
HTLB2-44	yellow		589	585	2.10	13.0	13.0	
HTLB2-44AY	super yellow		592	590	2.00	60.0	60.0	
HTLB2-44FY	super yellow		592	590	2.00	90.0	90.0	
HTLB2-44SY	super yellow		592	590	2.25	150.0	150.0	
HTLB2-45	hi-eff red		625	618	2.05	10.0	10.0	
HTLB2-45AO	super orange		620	615	2.00	60.0	60.0	
HTLB2-45FO	super orange		620	615	2.00	90.0	90.0	
HTLB2-45AOR	super fresh red		635	626	2.00	60.0	60.0	
HTLB2-45SOR	super fresh red		638	629	2.25	150.0	150.0	
HTLB2-46DR	super red		660	643	1.80	25.0	25.0	
HTLB2-46CR	super red		660	643	1.80	40.0	40.0	
HTLB2-46ARA	super red		660	645	1.86	65.0	65.0	
HTLB2-47	amber		610	606	2.05	12.0	12.0	
HTLB2-47FA	super amber		607	605	2.00	90.0	90.0	
HTLB2-48ABC	super blue		468	470	3.50	48.0	48.0	
HTLB2-49AWC	super white	yellow	(x:0.29, y:0.28)	3.50	150.0	150.0		

IV1:Labsphere LED-1100 IV2:EXELTRON 2001.

## Recommended Soldering Pattern:



## Tape Specifications: (3,000pcs/Reel)

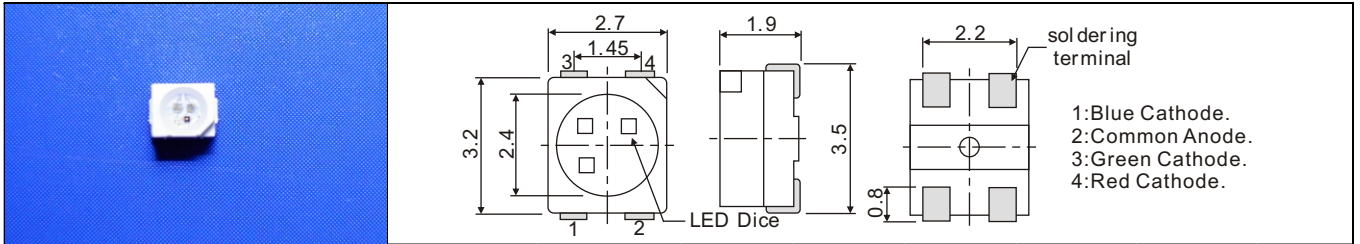


# Top LEDs

With Reflector Type 3.5mm(L) X 2.7mm(W) X 1.9mm(H)

If=20mA Ta=25°C

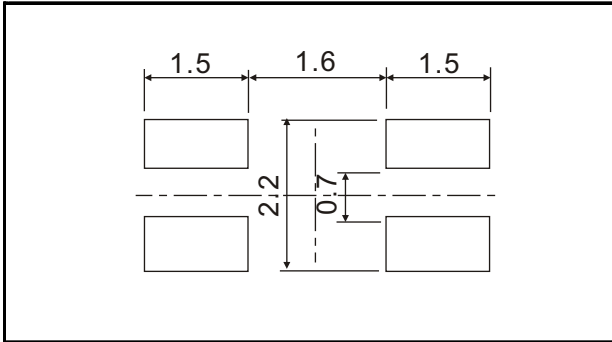
Device No	Color		Wavelength (nm)		VF Typical (V)	Brightness (mcd)		View Angle 2θ1/2
	Emitter	Lens	λp	λd		IV1	IV2	



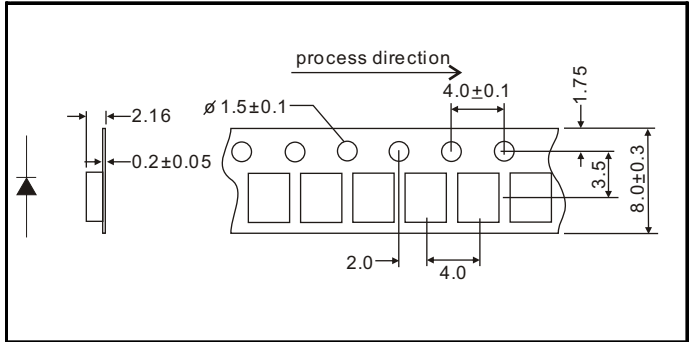
HTLB2-AOR AGC ABC	super fresh red	water clear	635	626	2.00	60.0	60.0	120
	super green		523	525	3.50	150.0	150.0	
	super blue		468	470	3.50	40.0	40.0	

IV1:Labsphere LED-1100 IV2:EXELTRON 2001.

## Recommended Soldering Pattern:



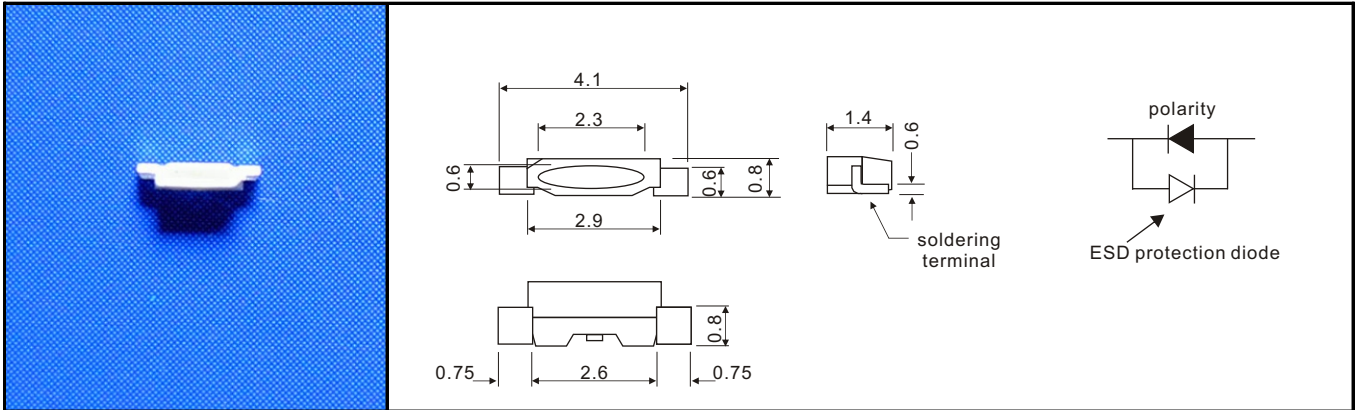
## Tape Specifications: (3,000pcs/Reel)



# Top LEDs

Side Look Type 1.6mm(L) X 0.4mm(W) X 0.8mm(H)

Ta=25°C



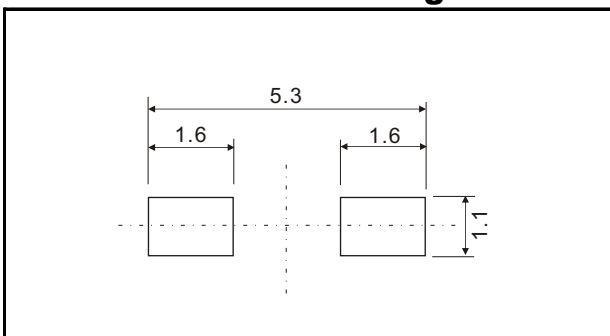
Unit : mm. Tolerance:0.2mm

Device No:HTLS1-49AWD

## Opto-Electrical Characteristics

Parameter	Symbol	Condition	Value	Unit
Forward Voltage	VF	IF=20mA	3.0 - 3.8	V
CIE	(x,y)	IF=20mA	W1G	(0.31,0.34)-(0.35,0.34)-(0.33,0.30)-(0.29,0.30)
			W1H	(0.29,0.30)-(0.33,0.34)-(0.31,0.36)-(0.27,0.26)
Luminous Intensity	IV	IF=20mA	700-1000	mcd
View Angle	$\theta$	IF=20mA	105	deg

## Recommended Soldering Pattern:



## Type Specifications:

( 3,000pcs/Reel )

