

30 ~ 60 Watts Single Output Class 2 Power Unit Enclosed Type

FEATURES

- ◆ Universal AC input / full range
- ◆ Fully isolated plastic case with IP64 level
- ◆ Built-in constant current limiting circuit with adjustable OCP level
- ◆ Optional dimming function: 1.1 ~ 10VDC(D type) or PWM (P type) controlled
- ◆ UL1310 Class 2 power unit Pass LPS
- ◆ Cooling by free air convection
- ◆ Suitable for LED related and moving sign applications
- ◆ 2 years warranty

SPECIFICATIONS

Input voltage 90~264VAC, 127~370VDC
 DC adjustment range ±10% rated output voltage
 Current adjustment 75~103% rated output, current adjustable by internal potential meter
 Overload protection
 ELN-30: 95%~110% constant current limiting, auto-recovery
 ELN-60: 95%~130% constant current limiting, auto-recovery
 Over voltage protection..... 110%~150% rated output voltage
 Shut down o/p voltage, re-power on to restart
 Withstand voltage I/P-O/P: 3kVAC
 Working temperature -20~+60°C (refer to output derating curve)
 Vibration 10~500Hz, 2G 10min/1 cycle, period for 60 min each along X, Y, Z axes
 Safety standards UL1310 Class 2, CAN/CSA-C22.2 No. 223-M91 (except for 48V) approved; design refer to TUV EN60950-1, EN61347-2-13
 EMC standards EN55022 class B, EN61000-3-2,3, EN61000-4-2,3,4,5,6,8,11, ENV50204
 Connection Input/Output: UL rated, 18AWGx2C (30cm); Output(with optional dimming function): 18AWGx4C (30cm)
 Dimension (LxWxH)(mm) ELN-30: 145x 47x 30
 ELN-60: 181x 61.5x 35
 Packing 0.26kg ; 60pcs / 16.6kg / 1.25CUFT (ELN-30)
 0.4kg ; 24pcs / 11.0kg / 0.75CUFT (ELN-60)

All Specifications are Typical at Nominal Line, full Load and 25°C. Unless Otherwise Noted.



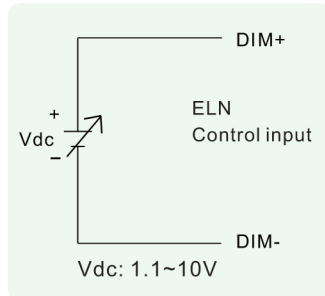
Model Number	Output Voltage (VDC)	Output Current (A)	Tol. %	R&N (mV)	EFF %
ELN-30-5	5	0~5.0	±5	80	75
ELN-30-9	9	0~3.4	±5	100	80
ELN-30-12	12	0~2.5	±5	120	82
ELN-30-15	15	0~2.0	±5	120	82
ELN-30-24	24	0~1.25	±5	150	85
ELN-30-27	27	0~1.12	±5	150	85
ELN-30-48	48	0~0.63	±5	250	87
ELN-60-9	9	0~5.0	±5	120	82
ELN-60-12	12	0~5.0	±5	120	85
ELN-60-15	15	0~4.0	±5	150	86
ELN-60-24	24	0~2.5	±5	150	87
ELN-60-27	27	0~2.3	±5	200	87
ELN-60-48	48	0~1.3	±5	250	88

▶ Dimming Control (optional)

Through the dimming function, output current of ELN series can be adjusted to reduce the energy consumption or adjust the brightness of LEDs connecting to it. Two kinds of control signal are accepted: 1.1 ~ 10VDC (D-type option) or PWM signal (P-type option).

■ D Type:

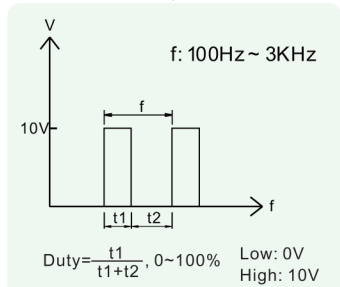
1.1 ~ 10Vdc external control signal



Order No.: ELN-30-5 D

■ P Type:

PWM control signal



Order No.: ELN-30-5 P