

5 ~ 7 Watts Single Output AC-DC LED Driver WallMount Type

FEATURES

- ◆ Suitable for LED lighting and moving sign applications
- ◆ Anywhere output voltage 3~27VDC
- ◆ CC mode for LED driver

SPECIFICATIONS

Input Voltage Range.....110(90~132), 230(180~264)VAC
 Input Current (rms).....0.3A Max.
 Output Voltage.....3~27VDC
 Max. Power..... 7W
 Withstand Voltage.....I/P-O/P: 3000 VAC
 Operating Temperature.....-10°C ~ +50°C
 Storage Temperature..... -20°C ~ +70°C
 Operating Humidity..... 20% to 90% RH
 Overload protection Output rated current $\pm 7\%$,
 constant current limiting, auto-recovery
 Protections.....OVP, Short Circuit Protection
 Safety Standard.....IEC/UL/EN60950-1,CE, CB
 EMC Standard.....(EN55022, CISPR22, FCC Part 15) Class B,
 EN61000-3-2, 3, EN61000-4-2, 3, 4, 5, 6, 8, 11, EN55024
 Standard output connector.....DC barrel jack
 Standard output cable / length.....UL2468 / 5 Ft.
 Packing (pcs/kgs)..... FLB05 B..... 90pcs / 8.3kgs
 FLB05 A/C/E/U..... 96pcs / 8.78kgs

All Specifications are Typical at Nominal Line, full Load and 25°C.
 Unless Otherwise Noted.



Order Number	Output Voltage (VDC)	Workable Output Voltage Range (VDC)	Output Current (mA)	LED Numbers (series)
FLB05-S03-z-xy	3.5	2.5 ~ 3.5	350 / 700 / 1050	1
FLB05-S07-z-Ay	7	5 ~ 7	350	2
FLB05-S09-z-Ay	10.5	7.5 ~ 10.5	350	3
FLB05-S15-z-Ay	14	10 ~ 14	350	4

z	Wall Mount Plug	z	Desk Top AC Inlet
U	US plug	C	China Plug
E	EU plug	A	Australian plug
B	British plug		

Order Number: FLB05-z-xy

* Note 1: x= Output current

x= A, 350mA / x=B, 700mA / x=C, 1050mA / x=D, 1400mA

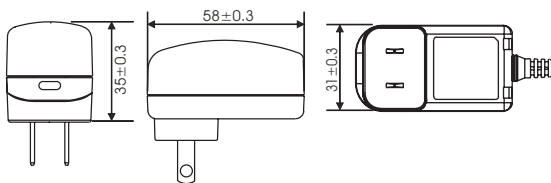
* Note 2: y= AC input voltage range.

y= L, 90~132VAC / y= H, 180~264VAC

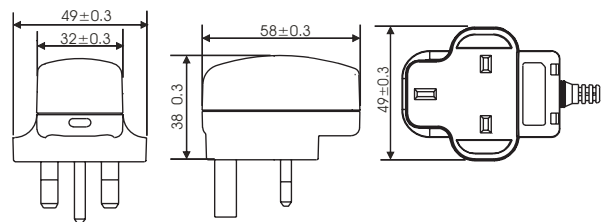
* Please note that FLB-xx is order number while FRA-xx is model number, all safety approvals of FLBxx are identical to FRAxx.

MECHANICAL DRAWING (Unit: mm)

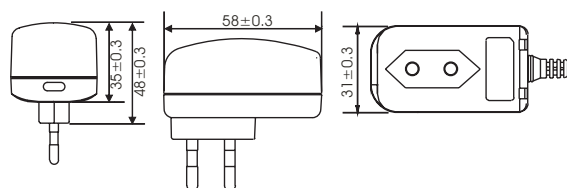
USA plug type (z=U)



UK plug type (z=B)



Europe plug type (z=E)



Australian plug type (z=A)

