

SURFACE ACOUSTIC WAVE FILTER

1. APPLICATION: TV IF FILTER

2. SYSTEM: B/G,D/K

3. MODEL: VTF23803M

4. ELECTRICAL CHARACTERISTICS

4-1 Insertion Loss: 36.0MHz (50) 34.3 3.0 dB

4-2 Attenuation: ref:36.0MHz

fp-8	30.0 MHz	-42.0 dB Max.
fp-6.5	31.5 MHz	-14.0 2.5 dB
fp-5.5	32.5 MHz	-14.0 2.5 dB
fp-4.43	33.57 MHz	-1.0 1.5 dB
fp	38.0 MHz	-6.0 1.5 dB
fp+1.5	39.5 MHz	-42.0 dB Max.

4-3 Amplitude ripple within passband: 0.5 dB Max.

4-4 Outband Rejection:

25.0 to 30.0 MHz	-35.0 dB Max.
39.5 to 45.0 MHz	-35.0 dB Max.

4-5 Maximum DC Voltage: 10V DC.

4-6 Operating Temperature Range: -10 to +70

4-7 Storage Temperature Range: -20 to +80

5. RELIABILITY TEST

5-1 Mechanical Shock

The components shall remain within the electrical specifications after 1000 shocks, acceleration 392 m/s^2 , duration 6 milliseconds.

5-2 Vibration Fatigue

The components shall remain within the electrical specifications after loaded vibration

of 600 rpm to 3300 rpm, amplitude 1.5 mm, x, y, z, direction for 2 hours.

5-3 Terminal Strength

The components shall remain within the electrical specifications after pulled 2 kgs weight

for 10 seconds towards an axis of each terminal.

5-4 High Temperature Storage

The components shall remain within the electrical specifications after being kept at the

85 ambient temperature for 96 hours, then kept at room temperature for 2 hours.

5-5 Low Temperature Storage

The components shall remain within the electrical specifications after being kept at the

-25 for 96 hours, then kept at room temperature for 2 hours.

5-6 Humidity Test

The components shall remain within the electrical specifications after being kept at the

condition of ambient temperature 40 , and 90 to 95% RH for 96 hours, then kept at room temperature and normal humidity for 2 hours.

5-7 Thermal Shock

The components shall remain within the electrical specifications after 10 cycles of Heat-

Cycles-Testing (one cycle: -25 for 20 minutes, then 85 for 20 minutes), then kept at

room temperature for 2 hours.

5-8 Solder-heat Resistance

The components shall remain within the electrical specifications after dipped in the solder at 260 for 10 1 seconds, then kept at room temperature for 2 hours.

(Terminal must be dipped leaving 1.5 mm from the case.)

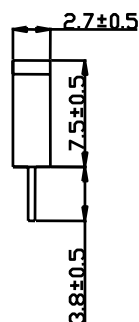
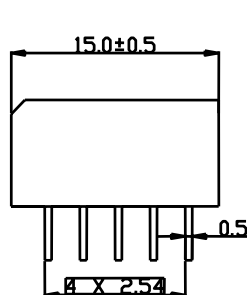
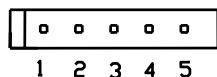
5-9 Solderability

Solderability of terminals shall be kept at more than 90% after dipped in the solder flux

at 235 5 for 2 0.5 seconds.

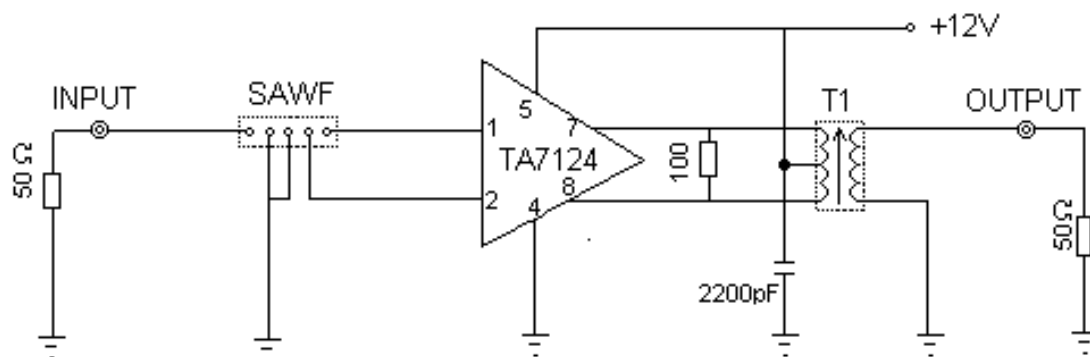
6. PACKAGE DIMENSION

UNIT: mm

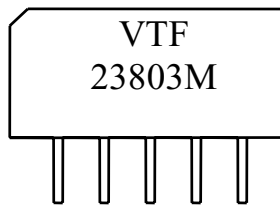


- 1. INPUT
- 2. INPUT
- 3. GROUND
- 4. OUTPUT
- 5. OUTPUT

7. MEASUREMENT CIRCUIT



8. MARKING



VTF23803M
1

MODEL
PIN NO.1 MARK

9. FREQUENCY RESPONSE

