

SAW Filter VTF93801M

SURFACE ACOUSTIC WAVE FILTER

1. APPLICATION: TV IF FILTER

2. SYSTEM: B/G,D/K,I,L,M/N

3. MODEL: VTF93801M

4. ELECTRICAL CHARACTERISTICS

4-1 Electrical Characteristics in M/N Mode (Input channel 1)

Insertion Loss: 33.50 MHz STD 2dB

Relative Attenuation:

32.00 MHz	-33.0 dB Max.
33.50 MHz	0 dB.
34.42 MHz	-28.0 dB Max.
38.00 MHz	-38.0 dB Max.
39.50 MHz	-38.0 dB Max.

Outband Rejection:

25.00 MHz to 32.00 MHz	-25.0 dB Max.
38.00 MHz to 45.00 MHz	-33.0 dB Max.

4-2 Electrical Characteristics in D/K,B/G,I,L Mode (Input channel 2)

Insertion Loss: 32.50 MHz STD 2 dB

Relative Attenuation:

30.00 MHz	-40.0 dB Max.
33.57 MHz	-30.0 dB Max.
32.50 MHz	0 dB.
38.00 MHz	-38.0 dB Max.
39.50 MHz	-38.0 dB Max.
40.00 MHz	-38.0 dB Max.
40.50 MHz	-37.0 dB Max.

Outband Rejection:

25.00 MHz to 30.00MHz	-36.0 dB Max.
38.00 MHz to 45.00 MHz	-35.0 dB Max.

4-3 Temperature Coefficient of Center Frequency: -75 ppm/ Max.

4-4 Maximum DC voltage: 10V DC.

4-5 Operating Temperature Range: -10 to +70

4-6 Storage Temperature Range: -20 to +80

5. RELIABILITY TEST

5-1 Mechanical Shock

The components shall remain within the electrical specifications after 1000 shocks, acceleration 392 m/s^2 , duration 6 milliseconds.

5-2 Vibration Fatigue

The components shall remain within the electrical specifications after loaded vibration of 600 rpm to 3300 rpm, amplitude 1.5 mm, x, y, z, direction for 2 hours.

5-3 Terminal Strength

The components shall remain within the electrical specifications after pulled 2 kgs weight for 10 seconds towards an axis of each terminal.

5-4 High Temperature Storage

The components shall remain within the electrical specifications after being kept at the 85 ambient temperature for 96 hours, then kept at room temperature for 2 hours.

5-5 Lowest Temperature Storage

The components shall remain within the electrical specifications after being kept at the -25 for 96 hours, then kept at room temperature for 2 hours.

5-6 Humidity Test

The components shall remain within the electrical specifications after being kept at the condition of ambient temperature 40 , and 90 to 95% RH for 96 hours, then kept at room temperature and normal humidity for 2 hours.

5-7 Thermal Shocks

The components shall remain within the electrical specifications after 10 cycles of Heat-Cycles-Testing (one cycle: -25 for 20 minutes, then 85 for 20 minutes), then kept at room temperature for 2 hours.

5-8 Soldering heat Resistances

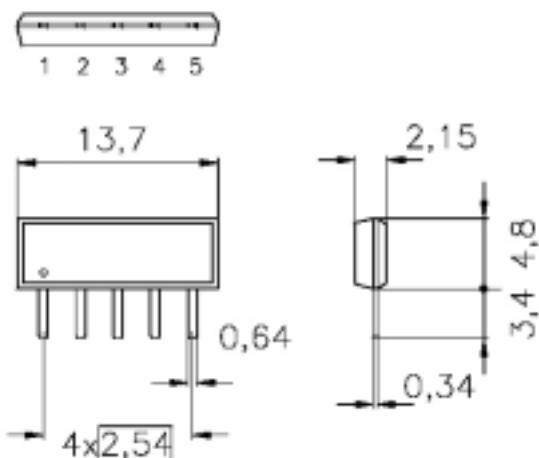
The components shall remain within the electrical specifications after dipped in the solder at 260 for 10 1 seconds, then kept at room temperature for 2 hours.
(Terminal must be dipped leaving 1.5 mm from the case.)

5-9 Soldering ability

Soldering ability of terminals shall be kept at more than 90% after dipped in the solder flux at 235 5 for 2 0.5 seconds.

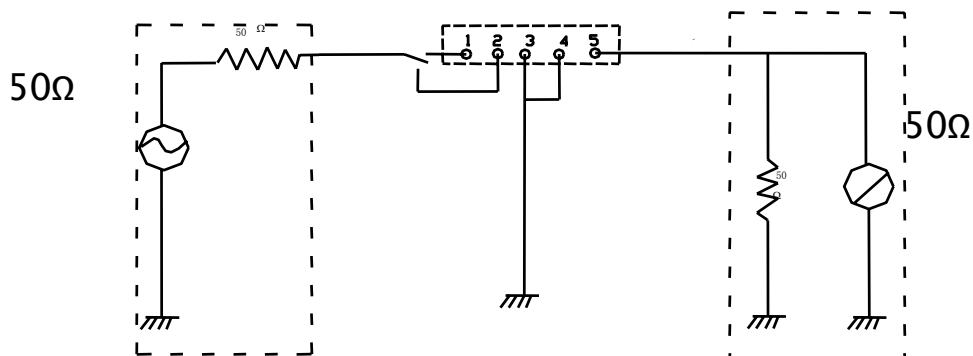
6. PACKAGE DIMENSION

Unit: mm

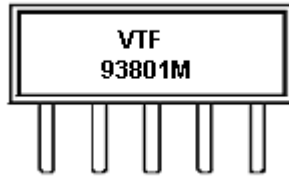


1. INPUT CHANNEL 1 / INPUT GROUND
2. INPUT GROUND / INPUT CHANNEL 2
3. GROUND
4. OUTPUT
5. OUTPUT

7. MEASUREMENT CIRCUIT



8. MARKING



VTF93801M . Model
1 . Pin 1

9. FREQUENCY RESPONSE

CHANNEL1

CHANNEL2

